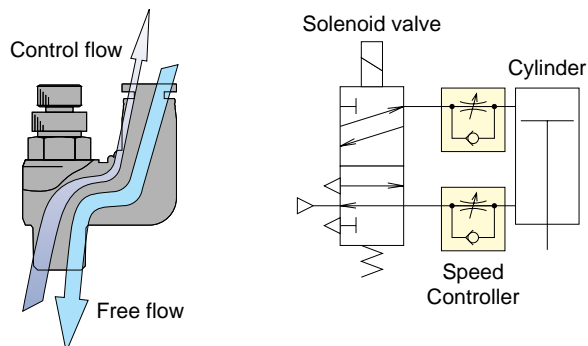


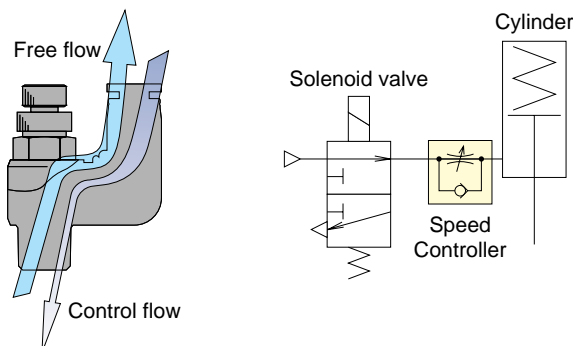
### \*1.Meter-out control

■ The flow rate of air entering from the thread side can be controlled, whereas air entering from the joint side comes out from the thread side at the same (not controlled) flow rate.



### \*2.Meter-in control

■ The flow rate of air entering from the joint side can be controlled, whereas air entering from the thread side comes out from the Joint side at the same (not controlled) flow rate.



## ⚠ Detailed Safety Instructions

Before using the PISCO device, be sure to read the "Safety Instructions", "Common Safety Instructions for Products Listed in This Manual" on page 7 and "Common Safety Instructions for Controllers" on page 43.

### ⚠ Warning

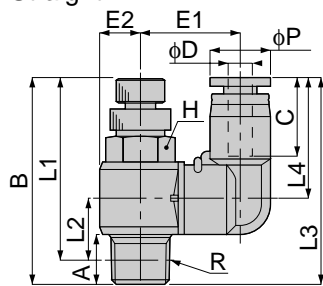
1. Adjust the speed of the actuator by opening the needle gradually from the fully closed position. With the needle open, there are chances of the actuator flying out. Turn the needle clockwise to close or counterclockwise to open.
2. Do not subject the product with a rotatable resin to forcible swinging or rotation. Otherwise the body may suffer damage or develop leakage.

### ⚠ Caution

1. The Speed Controller is designed to tolerate some air flow at fully. Therefore do not use it for applications that permits no air flow.

**JSF**  
FREE TYPE

Free Type  
Straight



Metric thread type



unit:mm

Model	Tube dia. φD	R	A	B		L1		L2	L3	L4	φP	C	E1	E2	H	Mass (g)
				max	min	max	min									
JSF 4-M5□(K)	4	M5×0.8	3	29.5	27	26.5	24	8	31	20	10	15	15	5	8	10
JSF 4-01□(K)		R1/8	8	40.5	34	36.5	30	10	34				16.5	7	10	19.5
JSF 6-M5□(K)	6	M5×0.8	3	29.5	27	26.5	24	8	32.5	21.5	12.5	17	16	5	8	11
JSF 6-01□(K)		R1/8	8	40.5	34	36.5	30	10	35.5				17.5	7	10	20.5
JSF 6-02□(K)		R1/4	11	47.5	41	41.5	35	11	38.5				20	9	14	37.5
JSF 8-01□(K)	8	R1/8	8	40.5	34	36.5	30	11.5	39	23	14.5	18.5	18.5	7	10	22.5
JSF 8-02□(K)		R1/4	11	47.5	41	41.5	35	12.5	41.5				21.5	9	14	40
JSF 8-03□		R3/8	12	53.5	46.5	47	40	13	42.5				23.5	11	19	67
JSF 10-02□(K)	10	R1/4	11	47.5	41	41.5	35	12.5	42	23.5	18	20.5	22.5	9	14	43
JSF 10-03□		R3/8	12	53.5	46.5	47	40	13	36.5				23.5	11	19	70.5
JSF 12-03□	12	R3/8	12	53.5	46.5	47	40	12.5	50	29.5	21.5	23.5	26	11	19	74.5
JSF 12-04□		R1/2	15	59	51.5	51	43.5	16.5	54				28	14	24	109.5