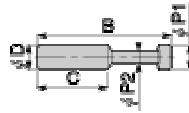


PPP Plug

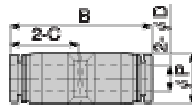


Unit : mm

Model	Applicable φD	B	φP1	φP2	C	Weight (g)	CAD file No.
PPP4□	4	28	5	3	14.9	0.5	TFPP-016
PPP6□	6	33	7	3	17	0.5	
PPP8□	8	37	9	4	18.1	1	
PPP10□	10	42	11	5	20.2	2	
PPP12□	12	44	13	6	23.4	2.5	

* Please enter C in the □ of model code only when Clean room specification is required.

PPU Union Straight

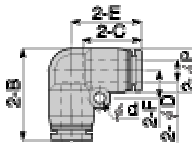


Unit : mm

Model	Tube φD.	C	B	φP	Weight (g)	Orifice dia. (φmm)	Eff. sect. Area (mm ²)	CAD file No.
PPU4□	4	14.9	30.8	10	4	3	5.3	TFPP-002
PPU6□	6	17	34.9	12.5	5.5	4.5	12.5	
PPU8□	8	18.4	37.8	14.5	8	7	20	
PPU10□	10	21.2	43.4	17.5	13	9	35	
PPU12□	12	23.4	47.8	21	18.5	11	59	

* Please enter C in the □ of model code only when Clean room specification is required.

PPV Union Elbow



Unit : mm

Model	Tube φD.	B	φP	C	E	φd	F	Weight (g)	Orifice dia. (φmm)	Eff. sect. Area (mm ²)	CAD file No.
PPV4□	4	21.9	10	14.9	16.9	3.2	6.5	4.5	2.8	4.2	TFPP-005
PPV6□	6	26.3	12.5	16.9	20.5	3.2	8	6	5	10	
PPV8□	8	29.9	15	18.4	22.4	4.2	10	9	7	16.5	
PPV10□	10	35	17.5	20.7	26.2	4.2	12	14	9	30	
PPV12□	12	39.9	21	23.4	29.4	4.2	14	20	11	47	

* Please enter C in the □ of model code only when Clean room specification is required.