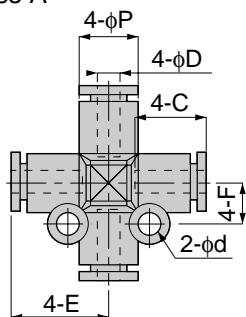


Tube Fitting Series Standard Type

unit:mm

PZA

Cross A



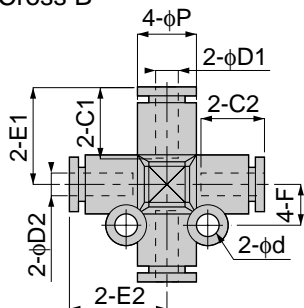
Model	Tube dia. ϕD	ϕP	C	E	ϕd	F	Mass (g)	Orifice (ϕmm)	Eff. a. (mm^2)
PZA 8	8	15	18.5	18.5	3.5	9	20	7	17.5
PZA 10	10	17.5	20.5	22	4.2	11	32	9	29.3
PZA 12	12	21	23.5	25.5	4.2	12	46	11	43.6
PZA 5/16	5/16	15	18.5	18.5	3.5	9	20	7	17.5
PZA 3/8	3/8	17.5	20.5	22	4.2	11	32.5	9	22.8
PZA 1/2	1/2	21	23.5	23.5	4.2	12	44	11	46.3



unit:mm

PZB

Cross B



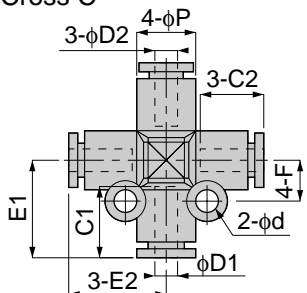
Model	Tube dia. $\phi D1$	Tube dia. $\phi D2$	ϕP	C1	C2	E1	E2	ϕd	F	Mass (g)	Orifice (ϕmm)	Eff. a. (mm^2)
PZB 8-6	8	6	15	18.5	17	23.5	23.5	3.5	9	19	5	10.6
PZB 10-8	10	8	17.5	20.5	18.5	27.5	27	4.2	11	29	7	19.3
PZB 12-10	12	10	21	23.5	20.5	31	31	4.2	12	44.5	9	30.8
PZB 5/16-1/4	5/16	1/4	15	18.5	17	23.5	23.5	3.5	9	19	5	13.5
PZB 3/8-5/16	3/8	5/16	17.5	20.5	18.5	27.5	27	4.2	11	29.5	7	19
PZB 1/2-3/8	1/2	3/8	21	23.5	20.5	31	31	4.2	12	44	9	27.1



unit:mm

PZC

Cross C



Model	Tube dia. $\phi D1$	Tube dia. $\phi D2$	ϕP	C1	C2	E1	E2	ϕd	F	Mass (g)	Orifice (ϕmm)	Eff. a. (mm^2)
PZC 8-6	8	6	15	18.5	17	23.5	23.5	3.5	9	18.5	5	9
PZC 10-8	10	8	17.5	20.5	18.5	27.5	27	4.2	11	27.5	7	17.4
PZC 12-10	12	10	21	23.5	20.5	31	31	4.2	12	44	9	29.3
PZC 5/16-1/4	5/16	1/4	15	18.5	17	23.5	23.5	3.5	9	18.5	5	12
PZC 3/8-5/16	3/8	5/16	17.5	20.5	18.5	27.5	27	4.2	11	28	7	18.2
PZC 1/2-3/8	1/2	3/8	21	23.5	20.5	31	31	4.2	12	44	9	17.4

