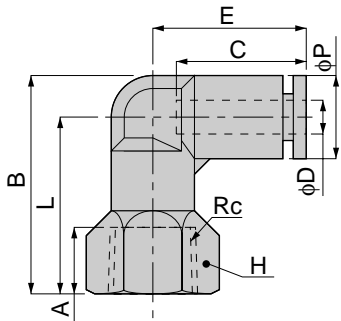


PLF

Female Elbow



unit:mm

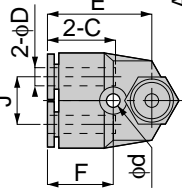
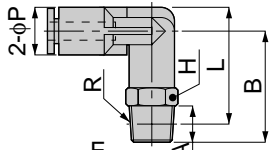
Model	Tube dia. φD	Rc	A	B	L	φP	C	E	H	Mass (g)	Orifice (φmm)	Eff. a. (mm ²)			
PLF 4-M5	4	M5×0.8	5	23	18	10	15	18	10	9.5	3	3.7			
PLF 4-M6		M6×1	6		18.5										
PLF 4-01		Rc1/8	8	27.5	21.5				14	14.5		3.5			
PLF 4-02		Rc1/4	11	30.5	24.5										
PLF 6-M5	6	M5×0.8	5	24.5	18.5	12.5	16.5	20	12	12.5	4	5.5			
PLF 6-M6		M6×1	6	25	19							14	15.5	4.6	6.4
PLF 6-01		Rc1/8	8	28	22				17	22					10.1
PLF 6-02		Rc1/4	11	31	25										
PLF 6-03		Rc3/8	12	32	26				14	19					17.6
PLF 8-01		Rc1/8	8	32	25							17	25	6	
PLF 8-02	Rc1/4	11	35	28	21	30.5	18.1								
PLF 8-03	Rc3/8	12	36	29				19	38.5	8	22.7				
PLF 10-02	Rc1/4	11	40.5	32	21	41	30								
PLF 10-03	Rc3/8	12	41.5	33							24	51.5	30.6		
PLF 10-04	Rc1/2	15	45.5	37											

unit:inch

MODEL	Tube dia. φD	NPT(F)	A	B	φP	C	E	H	Weight (g)	Orifice φMM	Eff.a. mm ²	Cv
PLF 5/32-U10U	5/32	10-32UNF	0.14	0.75	0.39	0.59	0.67	7/16	9.0	1.8	3.7	0.20
PLF 5/32-N1U	5/32	1/8	0.31	0.89	0.39	0.59	0.73	9/16	13.8	2.8	3.5	0.19
PLF 5/32-N2U	5/32	1/4	0.43	1.00	0.39	0.59	0.73	11/16	20.7	2.8	3.5	0.19
PLF 1/4-U10U	1/4	10-32UNF	0.14	0.73	0.49	0.67	0.77	1/2	12.8	1.8	5.5	0.30
PLF 1/4-N1U	1/4	1/8	0.31	0.87	0.49	0.67	0.79	9/16	15.2	4.6	10.1	0.55
PLF 1/4-N2U	1/4	1/4	0.43	0.98	0.49	0.67	0.79	11/16	22.7	4.6	10.1	0.55
PLF 1/4-N3U	1/4	3/8	0.47	1.20	0.49	0.67	0.79	7/8	34.0	4.6	10.0	0.54
PLF 5/16-N1U	5/16	1/8	0.31	0.98	0.57	0.71	0.91	9/16	18.7	6.0	17.6	0.95
PLF 5/16-N2U	5/16	1/4	0.43	1.01	0.57	0.71	0.91	11/16	26.1	6.0	17.7	0.96
PLF 5/16-N3U	5/16	3/8	0.47	1.14	0.57	0.71	0.91	7/8	36.1	6.0	18.1	0.98
PLF 3/8-N2U	3/8	1/4	0.43	1.26	0.69	0.79	1.04	3/4	39.1	8.0	28.0	1.52
PLF 3/8-N3U	3/8	3/8	0.47	1.30	0.69	0.79	1.04	7/8	44.7	8.0	29.0	1.57
PLF 3/8-N4U	3/8	1/2	0.59	1.46	0.69	0.79	1.04	1	60.9	8.0	27.2	1.47

PAX

Branch Elbow



Metric thread type

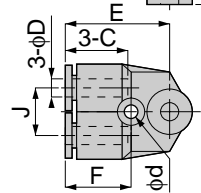
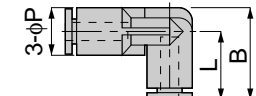


unit:mm

Model	Tube dia. φD	R	A	B	L	φP	C	J	E	H	φd	F	Mass (g)	Orifice (φmm)	Eff. a. (mm ²)
PAX 4-M5	4	M5×0.8	3	21.5	23.5	10	15	11	23	10	3.2	14.5	12.5	3	2.2
PAX 4-M6		M6×1	4	22.5											2.5
PAX 4-01		R1/8	8	24.5	25.5					14		15.5	2.7		
PAX 4-02		R1/4	11	27.5	26.5										2.5
PAX 6-M5	6	M5×0.8	3	25	28	12.5	17	12	26.5	12	4.2	15.5	17	4.6	2.2
PAX 6-M6		M6×1	4	26											6.4
PAX 6-01		R1/8	8	28	30					14		18.5	6.9		
PAX 6-02		R1/4	11	31	31										17
PAX 6-03		R3/8	12	33	32.5					17		39.5	6.8		
PAX 8-01		R1/8	8	31	34										14
PAX 8-02	R1/4	11	34	35	17	30.5	6	14.5							
PAX 8-03	R3/8	12	36	36.5				44	15						
PAX 10-02	10	R1/4	11	37	40	18	20			18	33.5	17	4.2	18.5	45
PAX 10-03		R3/8	12	38	40.5			21	75.5						
PAX 10-04		R1/2	15	41	42							66		38.2	
PAX 12-02		R1/4	11	41	45.5			21.5	23.5						20
PAX 12-03	R3/8	12	42	46	83	42.1									
PAX 12-04	R1/2	15	45	47.5											

PAU

Union A



unit:mm

Model	Tube dia. φD	B	L	φP	C	J	E	φd	F	Mass (g)	Orifice (φmm)	Eff. a. (mm ²)
PAU 4	4	22	17	10	15	11	23	3.2	14.5	8	3	2.5
PAU 6	6	26	20	12.5	17	12	26.5	4.2	15.5	11.5	4.6	7.2
PAU 8	8	30	23	14.5	18	14	29.5	4.2	17	16.5	6	16.3
PAU 10	10	34.5	25.5	18	20	18	33.5	4.2	19	27	8	27.9
PAU 12	12	40	29.5	21.5	23.5	20	35.5	4.2	20.5	39	10	40

