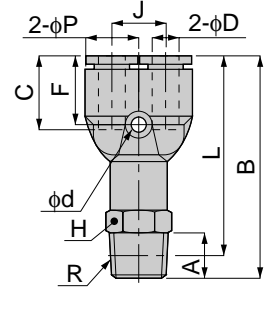




Branch Y



Metric thread type



unit:mm

Model	Tube dia. φD	R	A	B	L	φP	C	J	H	φd	F	Mass (g)	Orifice (φmm)	Eff. a. (mm ²)
PX 4-M5	4	M5×0.8	3	38	35	10	15	11	10	3.4	14.5	12	1.8	1.5
PX 4-01		R1/8	8	41	38				14	3.2		15	3.0	4.2
PX 4-02		R1/4	11	44	38				14	3.2		23	3.0	4.2
PX 6-M5	6	M5×0.8	3	41.5	37.5	13	17	12	12	3.2	16	16	1.8	1.5
PX 6-M6		M6×1	4	42.5	38.5							16	3.0	6.5
PX 6-01		R1/8	8	44.5	40.5							18	4.6	10
PX 6-02	R1/4	11	47.5	41.5	14	25	39	4.6	10					
PX 6-03	R3/8	12	49.5	43	17	39	39	4.6	10					
PX 8-01	8	R1/8	8	49	45	15	18.5	14	14	3.2	17.5	23.5	6	16.5
PX 8-02		R1/4	11	52	46				17	29.5		42.5		
PX 8-03		R3/8	12	53.5	47				17	42.5		42.5		
PX 10-02	10	R1/4	11	58.5	52.5	18	20.5	18	17	4.5	20	43	7.5	30
PX 10-03		R3/8	12	59.5	53				21	51.5		73		
PX 10-04		R1/2	15	62.5	54.5				21	73		73		
PX 12-02	12	R1/4	11	63.5	57.5	21	23.5	20	21	4.5	22.5	63.5	8	37
PX 12-03		R3/8	12	64.5	58							64.5	9	
PX 12-04		R1/2	15	67.5	59.5							79.5	9	
PX 16-03	16	R3/8	12	76.5	70	24.5	24.5	24	22	4.5	22.5	95.5	11	54.5
PX 16-04		R1/2	15	80.5	72.5							99.5	13	59
PX 1/4-01	1/4	R1/8	8	44.5	40.5	13	17	12	12	3.2	16	18	4.6	10
PX 1/4-02		R1/4	11	47.5	41.5				14	25		39		
PX 1/4-03		R3/8	12	49.5	43				17	39		39		
PX 5/16-01	5/16	R1/8	8	49	45	15	18.5	14	14	3.2	17.5	23.5	6	16.5
PX 5/16-02		R1/4	11	52	46				17	29.5		42.5		
PX 5/16-03		R3/8	12	53.5	47				17	42.5		42.5		
PX 3/8-02	3/8	R1/4	11	58.5	52.5	18	20.5	18	17	4.5	20	43	7.5	30
PX 3/8-03		R3/8	12	59.5	53				21	51.5		73		
PX 3/8-04		R1/2	15	62.5	54.5				21	73		73		

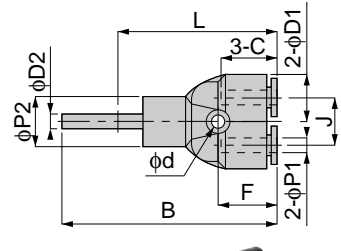


unit:inch

MODEL	Tube dia. φD	NPT	A	B	L	φP	C	J	H	φd	F	Weight (g)	Orifice φMM	Eff. a. mm ²	Cv
PX 5/32-U10U	5/32	10-32UNF	0.14	1.50	1.36	0.39	0.59	0.43	7/16	0.13	0.57	11.1	1.8	1.5	0.08
PX 5/32-N1U	5/32	1/8	0.31	1.61	1.50	0.39	0.59	0.43	7/16	0.13	0.57	14.5	3.0	4.2	0.23
PX 5/32-N2U	5/32	1/4	0.43	1.73	1.50	0.39	0.59	0.43	9/16	0.13	0.57	23.0	3.0	4.2	0.23
PX 3/16-U10U	3/16	10-32UNF	0.14	1.63	1.46	0.51	0.67	0.47	1/2	0.13	0.65	16.7	1.8	1.5	0.08
PX 3/16-N1U	3/16	1/8	0.31	1.67	1.59	0.51	0.67	0.47	1/2	0.13	0.65	18.8	4.2	5.8	0.31
PX 3/16-N2U	3/16	1/4	0.43	1.87	1.63	0.51	0.67	0.47	9/16	0.13	0.65	26.4	4.2	5.4	0.29
PX 3/16-N3U	3/16	3/8	0.47	1.95	1.69	0.51	0.67	0.47	11/16	0.13	0.65	40.2	4.2	5.3	0.29
PX 1/4-U10U	1/4	10-32UNF	0.14	1.63	1.46	0.51	0.67	0.47	1/2	0.13	0.65	16.1	1.8	1.5	0.08
PX 1/4-N1U	1/4	1/8	0.31	1.67	1.59	0.51	0.67	0.47	1/2	0.13	0.65	18.3	4.5	10.0	0.54
PX 1/4-N2U	1/4	1/4	0.43	1.87	1.63	0.51	0.67	0.47	9/16	0.13	0.65	25.8	4.5	10.0	0.54
PX 1/4-N3U	1/4	3/8	0.47	1.95	1.69	0.51	0.67	0.47	11/16	0.13	0.65	38.7	4.5	10.0	0.54
PX 5/16-N1U	5/16	1/8	0.31	1.93	1.77	0.59	0.71	0.55	9/16	0.18	0.69	23.5	6.0	16.5	0.89
PX 5/16-N2U	5/16	1/4	0.43	2.05	1.81	0.59	0.71	0.55	9/16	0.18	0.69	29.3	6.0	16.5	0.89
PX 5/16-N3U	5/16	3/8	0.47	2.07	1.85	0.59	0.71	0.55	9/16	0.18	0.69	42.8	6.0	16.5	0.89
PX 3/8-N2U	3/8	1/4	0.43	2.30	2.07	0.71	0.79	0.71	11/16	0.18	0.79	44.0	6.0	25.2	1.37
PX 3/8-N3U	3/8	3/8	0.47	2.34	2.09	0.71	0.79	0.71	11/16	0.18	0.79	52.0	6.5	25.9	1.40
PX 3/8-N4U	3/8	1/2	0.59	2.46	2.15	0.71	0.79	0.71	7/8	0.18	0.79	75.1	6.5	25.5	1.38
PX 1/2-N2U	1/2	1/4	0.43	2.50	2.26	0.83	0.93	0.79	7/8	0.18	0.89	64.0	8.0	37.0	2.01
PX 1/2-N3U	1/2	3/8	0.47	2.54	2.28	0.83	0.93	0.79	7/8	0.18	0.89	65.4	9.6	37.0	2.01
PX 1/2-N4U	1/2	1/2	0.59	2.66	2.34	0.83	0.93	0.79	7/8	0.18	0.89	80.8	9.6	37.0	2.01



Branch Union Y

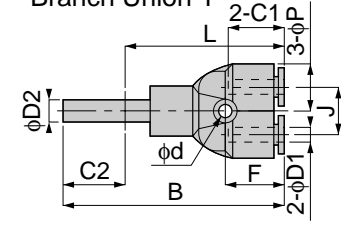


unit:mm

Model	Tube dia. φD1	φD2	B	L	φP1	φP2	C	J	φd	F	Mass (g)	Orifice (φmm)	Eff. a. (mm ²)
PYJ 4	4	4	49	34	10	10	15	11	3.4	14.5	6.5	2.5	2
PYJ 6	6	6	56	39	13	12.5	17	12	3.2	16	9.5	4	7.5
PYJ 8	8	8	59.5	43.5	15	13	18	14	3.2	17.5	13.5	6	16.5
PYJ 10	10	10	68.5	52.5	18	18	20.5	18	4.2	19.5	23.5	7.5	27
PYJ 12	12	12	78.5	59.5	21	21	23.5	20	4.2	22.5	35	9	42



Differend Diam. Branch Union Y



unit:mm

Model	Tube dia. φD1	φD2	B	L	φP	C1	C2	J	φd	F	Mass (g)	Orifice (φmm)	Eff. a. (mm ²)
PWJ 6-4	4	6	51	36.5	10	15	17	11	3.4	14.5	7	2	4.2
PWJ 8-6	6	8	56.5	40	13	17	18	12	3.2	16	9.5	3.6	10
PWJ 10-8	8	10	63	44.5	15	18.5	20.5	14	3.2	17.5	14.5	6	16.5
PWJ 12-10	10	12	70	54.5	18	20.5	23.5	18	4.2	19.5	23	7.5	27

