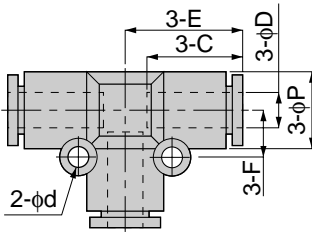


CAD **PE**

Union Tee

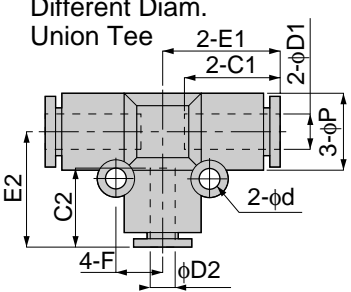


Model	Tube dia. φD	φP	C	E	φd	F	Mass (g)	Orifice (φmm)	Eff. a. (mm <sup>2</sup> )
PE 4	4	10	15	17	-	-	7	3	5.3
PE 6	6	13	17	20.5	3.2	8	10.5	5	12.5
PE 8	8	15	18	22.5	3.2	9	15.5	7	20
PE 10	10	18	20	25.5	4.2	12	25.5	9	35
PE 12	12	21.5	23.5	28.5	4.2	14	36	10.7	59
PE 16	16	25.5	24	33.5	4.2	12	43.5	13	89.8
PE 1/4	1/4	13	17	20.5	3.2	8	10.5	4.6	12.5
PE 5/16	5/16	15	18	22.5	3.2	9	15	6	20
PE 3/8	3/8	18	20	25.5	4.2	12	25.5	8	35

unit:mm  
1  
2

CAD **PEG**

Different Diam. Union Tee

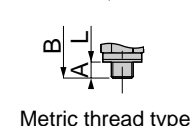
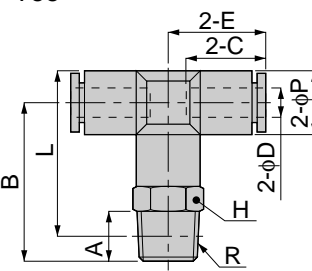


Model	Tube dia. φD1	Tube dia. φD2	φP	C1	C2	E1	E2	φd	F	Mass (g)	Orifice (φmm)	Eff. a. (mm <sup>2</sup> )
PEG 6-4	6	4	13	17	15	20.5	19.5	3.2	8	11	3	4.1
PEG 8-6	8	6	15	18.5	18.5	22.5	22.5	3.2	9	15	5	10.3
PEG 10-8	10	8	17.5	20.5	20.5	25.5	25	4.2	12	24	7	19.6
PEG 12-10	12	10	21	23.5	23.5	29.5	29.5	4.2	14	35	9	32.5

unit:mm  
1

CAD **PB**

Tee



Metric thread type

Model	Tube dia. φD	R	A	B	L	φP	C	E	H	Mass (g)	Orifice (φmm)	Eff. a. (mm <sup>2</sup> )			
PB 4-M5	4	M5×0.8	3	20.5	22.5	10	15	17	10	11.5	1.8	1.5			
PB 4-M6		M6×1	4	21.5						14	3	4.1			
PB 4-01		R1/8	8	23.5	24.5					14	24				
PB 4-02		R1/4	11	26.5	25.5					14	24				
PB 6-M5	6	M5×0.8	3	22	25	13	17	20.5	12	15.5	1.8	1.5			
PB 6-M6		M6×1	4	23						16	3	6.8			
PB 6-01		R1/8	8	26	28.5					14	25.5	4.6	10		
PB 6-02		R1/4	11	29	29.5					14	25.5	4.6	10		
PB 6-03	R3/8	12	31	31	17	38.5									
PB 8-01	8	R1/8	8	26.5	30	15	18	22.5	14	22.5	6	16.5			
PB 8-02		R1/4	11	29.5	31					14			28		
PB 8-03		R3/8	12	31.5	32.5					17			41		
PB 10-02	10	R1/4	11	36	38.5	17.5	20	25.5	17	41.5	8	30			
PB 10-03		R3/8	12	37	39					17			50.5		
PB 10-04		R1/2	15	40	40.5					21			72.5		
PB 12-02	12	R1/4	11	38	42.5	21	23.5	28.5	21	61.5	8	30			
PB 12-03		R3/8	12	39	43					17			61.5	10	47
PB 12-04		R1/2	15	42	44.5					21			77		
PB 16-03	16	R3/8	11	47	53	25	25	33.5	22	95	11	80.1			
PB 16-04		R1/2	15	51	55.5					22	99	13	90.8		
PB 1/4-01	1/4	R1/8	8	26	28.5	13	17	20.5	12	17.5	4.6	10			
PB 1/4-02		R1/4	11	29	29.5					14			25.5		
PB 1/4-03		R3/8	12	31	31					17			38.5		
PB 5/16-01	5/16	R1/8	8	26.5	30	15	18	22.5	14	22.5	6	16.5			
PB 5/16-02		R1/4	11	29.5	31					14			28		
PB 5/16-03		R3/8	12	31.5	32.5					17			41		
PB 3/8-02	3/8	R1/4	11	36	38.5	17.5	20	25.5	17	41.5	8	30			
PB 3/8-03		R3/8	12	37	39					17			51		
PB 3/8-04		R1/2	15	40	40.5					21			72.5		

unit:mm  
1  
2  
3  
4

unit:inch

MODEL	Tube dia. φD	NPT	A	B	L	C	E	φP	H	Weight (g)	Orifice φMM	Eff.a. mm <sup>2</sup>	Cv
PB 5/32-U10U	5/32	10-32UNF	0.14	0.81	0.69	0.59	0.67	0.39	7/16	10.5	1.8	1.5	0.08
PB 5/32-N1U	5/32	1/8	0.31	0.93	0.77	0.59	0.67	0.39	7/16	13.9	3.0	4.1	0.22
PB 5/32-N2U	5/32	1/4	0.43	1.04	0.85	0.59	0.67	0.39	9/16	22.4	3.0	4.1	0.22
PB 3/16-U10U	3/16	10-32UNF	0.14	0.91	0.79	0.67	0.81	0.45	1/2	16.1	1.8	1.5	0.08
PB 3/16-N1U	3/16	1/8	0.31	1.02	0.87	0.67	0.81	0.45	1/2	18.2	4.0	6.2	0.34
PB 3/16-N2U	3/16	1/4	0.43	1.14	0.91	0.67	0.81	0.45	9/16	25.8	4.0	6.0	0.33
PB 3/16-N3U	3/16	3/8	0.47	1.22	0.96	0.67	0.81	0.45	11/16	39.8	4.0	5.7	0.31
PB 1/4-U10U	1/4	10-32UNF	0.14	0.91	0.79	0.67	0.81	0.45	1/2	15.9	1.8	1.5	0.08
PB 1/4-N1U	1/4	1/8	0.31	1.02	0.87	0.67	0.81	0.45	1/2	18.1	4.6	10.0	0.54
PB 1/4-N2U	1/4	1/4	0.43	1.14	0.91	0.67	0.81	0.45	9/16	25.7	4.6	10.0	0.54
PB 1/4-N3U	1/4	3/8	0.47	1.22	0.96	0.67	0.81	0.45	11/16	38.6	4.6	10.0	0.54
PB 5/16-N1U	5/16	1/8	0.31	1.04	0.89	0.71	0.89	0.57	9/16	22.5	6.0	16.5	0.89
PB 5/16-N2U	5/16	1/4	0.43	1.46	0.93	0.71	0.89	0.57	9/16	28.5	6.0	16.5	0.89
PB 5/16-N3U	5/16	3/8	0.47	1.57	0.98	0.71	0.89	0.57	11/16	42.0	6.0	16.5	0.89
PB 3/8-N2U	3/8	1/4	0.43	1.42	1.18	0.79	1.00	0.69	11/16	42.3	8.0	31.2	1.69
PB 3/8-N3U	3/8	3/8	0.47	1.46	1.20	0.79	1.00	0.69	11/16	50.2	8.0	31.9	1.73
PB 3/8-N4U	3/8	1/2	0.59	1.57	1.26	0.79	1.00	0.69	7/8	73.5	8.0	28.8	1.56
PB 1/2 N2U	1/2	1/4	0.43	1.50	1.26	0.93	1.10	0.83	7/8	61.4	8.0	30.0	1.63
PB 1/2 N3U	1/2	3/8	0.47	1.54	1.28	0.93	1.10	0.83	7/8	62.1	10.0	47.0	2.55
PB 1/2 N4U	1/2	1/2	0.59	1.65	1.34	0.93	1.10	0.83	7/8	77.9	10.0	47.0	2.55