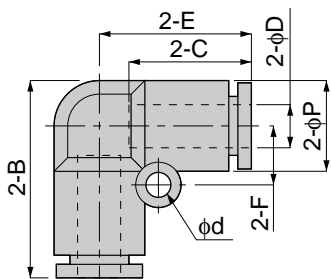


# Tube Fitting Series Standard Type

**PV**  
Union Elbow

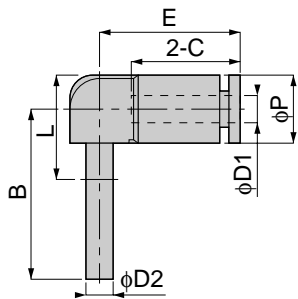


unit:mm

Model	Tube dia. $\phi D$	B	$\phi P$	C	E	$\phi d$	F	Mass (g)	Orifice ( $\phi mm$ )	Eff. a. ( $mm^2$ )
PV 4	4	22	10	15	17	-	-	5	2.8	4.2
PV 6	6	26.5	12.5	17	20.5	3.2	8	7.5	5	10
PV 8	8	30	15	18	22.5	4.2	10	10	7	16.5
PV 10	10	35	17.5	20	26.5	4.2	12	17	9	30
PV 12	12	40	21	23.5	29.5	4.2	14	24.5	11	47
PV 16	16	46	25	24	33.5	4.2	12	30	13	91.6
PV 1/4	1/4	26.5	12.5	17	20.5	3.2	8	7.5	5	10
PV 5/16	5/16	30	14.5	18	22.5	4.2	10	10.5	7	16.5
PV 3/8	3/8	35	17.5	20	26.5	4.2	12	18	8	30



**PLJ**  
Socket Elbow

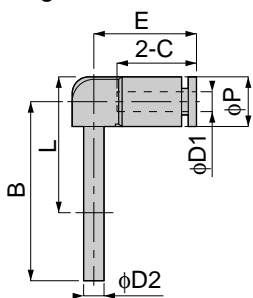


unit:mm

Model	Tube dia. $\phi D1$	$\phi D2$	B	L	$\phi P$	C	E	Mass (g)	Orifice ( $\phi mm$ )	Eff. a. ( $mm^2$ )
PLJ 4	4	4	25	15	10	15	20	3.5	2.5	2
PLJ 6	6	6	28.5	17.5	12.5	17	23	5.5	4	7.5
PLJ 8	8	8	30.5	19.5	14.5	18	26	8	6	16.5
PLJ 10	10	10	33.5	22	17.5	20	30	12.5	7.5	30
PLJ 12	12	12	39	25.5	21	23.5	32.5	17.5	9.5	42.5
PLJ 1/4	1/4	1/4	28.5	17.5	12.5	17	23	5.5	4	7.5
PLJ 5/16	5/16	5/16	30.5	19.5	14.5	18	26	8	6	16.5
PLJ 3/8	3/8	3/8	33.5	22	17.5	20	30	12.5	7.5	30



**PLLJ**  
Long Socket Elbow

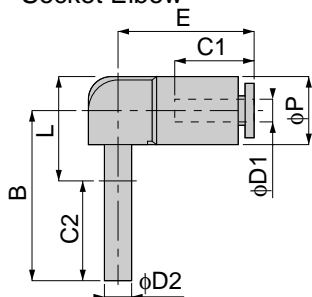


unit:mm

Model	Tube dia. $\phi D1$	$\phi D2$	B	L	$\phi P$	C	E	Mass (g)	Orifice ( $\phi mm$ )	Eff. a. ( $mm^2$ )
PLLJ 4	4	4	36	26	10	15	20	4	4	2.5
PLLJ 6	6	6	42	31	12.5	17	23	5.5	5.5	4
PLLJ 8	8	8	46.5	35.5	15	18	25.5	8.5	6	6
PLLJ 10	10	10	51.5	40	17.5	20	29.5	13.5	13.5	7.5
PLLJ 12	12	12	59.5	40	21	23.5	32.5	19.5	19.5	9
PLLJ 1/4	1/4	1/4	42	31	12.5	17	23	5.5	5.5	4
PLLJ 5/16	5/16	5/16	46.5	35.5	14.5	18	25.5	8.5	8.5	6
PLLJ 3/8	3/8	3/8	51.5	40	17.5	20	29.5	13.5	13.5	7.5



**PLGJ**  
Differen Diam. Socket Elbow



unit:mm

Model	Tube dia. $\phi D1$	$\phi D2$	B	L	$\phi P$	C1	C2	E	Mass (g)	Orifice ( $\phi mm$ )	Eff. a. ( $mm^2$ )
PLGJ 6-4	4	6	28.5	17.5	12.5	15	17	22	5.5	2.5	4.6
PLGJ 8-6	6	8	30.5	19.5	14.5	17	18	26	7	4	10.4
PLGJ 10-8	8	10	33.5	22	17.5	18	20	29	11	6	17.4
PLGJ 12-10	10	12	39	26	21	20	23.5	32.5	17	7.5	28
PLGJ 5/16-1/4	1/4	5/16	30.5	19.5	14.5	17	18	26	7.5	4	12.8
PLGJ 3/8-5/16	5/16	3/8	33.5	22	17.5	18	20	29	11	6	17.6

