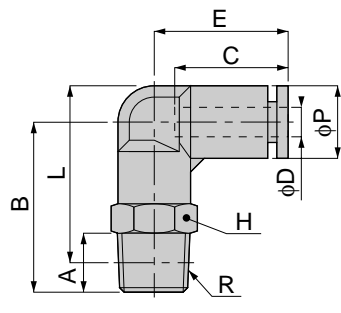




Elbow



Metric thread type



unit:mm

Model	Tube dia. φD	R	A	B	L	φP	C	E	H	Mass (g)	Orifice (φmm)	Eff. a. (mm ²)			
PL 4-M5	4	M5×0.8	3	20.5	22.5	10	15	18	10	9	1.8	1.5			
PL 4-M6		M6×1	4	21.5						9.5					
PL 4-01		R1/8	8	23.5						12			3	4.2	
PL 4-02		R1/4	11	26.5						24.5					14
PL 6-M5	6	M5×0.8	3	22	25	12.5	17	20	12	12	1.8	1.5			
PL 6-M6		M6×1	4	23						12.5			3	6.1	
PL 6-01		R1/8	8	25						14					4.6
PL 6-02		R1/4	11	28						28			14	22	
PL 6-03	R3/8	12	30	29.5	17	35									
PL 8-01	8	R1/8	8	28	31	14.5	18	23	14	18	6	16.5			
PL 8-02		R1/4	11	31						32			24		
PL 8-03		R3/8	12	38						38.5			17	37	
PL 10-01		R1/8	8	33						37.5			17.5	20.5	26.5
PL 10-02	R1/4	11	36	38.5	34										
PL 10-03	R3/8	12	37	39	42	8	30								
PL 10-04	R1/2	15	40	40.5	21			64							
PL 12-02	12	R1/4	11	38	42.5	21	23.5	29.5	21	50.5	8	30			
PL 12-03		R3/8	12	39						43			51.5	10	47
PL 12-04		R1/2	15	42						44.5			66		
PL 16-03		16	R3/8	11						47			53	25	24
PL 16-04	R1/2		15	51	55.5	84.5	13	93.3							
PL 1/4-01	1/4	R1/8	8	25	27	12.5	17	20	12	14	4.6	10			
PL 1/4-02		R1/4	11	28						28			14	22	
PL 1/4-03		R3/8	12	30						29.5			17	35	
PL 5/16-01	5/16	R1/8	8	28	31	14.5	18	23	14	18	6	16.5			
PL 5/16-02		R1/4	11	31						32			24		
PL 5/16-03		R3/8	12	33						33.5			17	37	
PL 3/8-02	3/8	R1/4	11	36	39	17.5	20	26.5	17	34	8	30			
PL 3/8-03		R3/8	12	37						40.5			42		
PL 3/8-04		R1/2	15	40						40.5			21	64	
PL 1/2-02		1/2	R1/4	11						38			42.5	21	23.5
PL 1/2-03	R3/8		12	39	43	52	10	47							
PL 1/2-04	R1/2		15	42	44.5	67.5									
PL 5/8-03	5/8	R3/8	12	47	53	25	24	33.5	22	82	13	80.2			
PL 5/8-04		R1/2	15	51						55.5			85.5	13	93.3

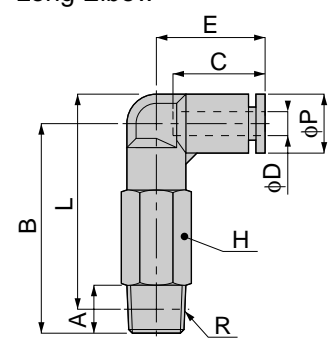
※1/2 and 5/8 are order production.

unit:inch

MODEL	Tube dia. φD	NPT	A	B	L	φP	C	E	H	Weight (g)	Orifice φMM	Eff.a. mm ²	Cv
PL 5/32-U10U	5/32	10-32UNF	0.14	0.85	0.75	0.39	0.59	0.67	7/16	8.3	1.8	1.5	0.08
PL 5/32-N1U	5/32	1/8	0.31	0.93	0.77	0.39	0.59	0.73	7/16	11.7	2.8	4.2	0.23
PL 5/32-N2U	5/32	1/4	0.43	1.04	0.81	0.39	0.59	0.73	9/16	20.2	2.8	4.2	0.23
PL 3/16-U10U	3/16	10-32UNF	0.14	0.87	0.75	0.45	0.67	0.77	1/2	12.7	1.8	1.5	0.08
PL 3/16-N1U	3/16	1/8	0.31	0.98	0.83	0.45	0.67	0.79	1/2	14.8	3.5	5.8	0.31
PL 3/16-N2U	3/16	1/4	0.43	1.10	0.87	0.45	0.67	0.79	9/16	22.6	3.5	5.8	0.31
PL 3/16-N3U	3/16	3/8	0.47	1.18	0.93	0.45	0.67	0.79	11/16	36.3	3.5	5.8	0.31
PL 1/4-U10U	1/4	10-32UNF	0.14	0.87	0.75	0.45	0.67	0.77	1/2	12.5	1.8	1.5	0.08
PL 1/4-N1U	1/4	1/8	0.31	0.98	0.83	0.45	0.67	0.79	1/2	14.6	4.6	10.0	0.54
PL 1/4-N2U	1/4	1/4	0.43	1.10	0.87	0.45	0.67	0.79	9/16	22.4	4.6	10.0	0.54
PL 1/4-N3U	1/4	3/8	0.47	1.18	0.93	0.45	0.67	0.79	11/16	35.9	4.6	10.0	0.54
PL 5/16-N1U	5/16	1/8	0.31	1.10	0.94	0.57	0.71	0.91	9/16	18.4	6.0	16.5	0.89
PL 5/16-N2U	5/16	1/4	0.43	1.22	0.98	0.57	0.71	0.91	9/16	24.2	6.0	16.5	0.89
PL 5/16-N3U	5/16	3/8	0.47	1.30	1.04	0.57	0.71	0.91	11/16	37.8	6.0	16.5	0.89
PL 3/8-N1U	3/8	1/8	0.31	1.42	1.18	0.69	0.79	1.04	9/16	31.7	6.0	22.4	1.21
PL 3/8-N2U	3/8	1/4	0.43	1.46	1.20	0.69	0.79	1.04	11/16	34.5	8.0	30.0	1.63
PL 3/8-N3U	3/8	3/8	0.47	1.57	1.26	0.69	0.79	1.04	11/16	42.9	8.0	30.0	1.63
PL 3/8-N4U	3/8	1/2	0.59	1.48	1.26	0.69	0.79	1.04	7/8	65.6	8.0	30.0	1.63
PL 1/2-N2U	1/2	1/4	0.43	1.54	1.30	0.83	0.93	1.16	7/8	51.1	8.0	30.0	1.63
PL 1/2-N3U	1/2	3/8	0.47	1.54	1.28	0.83	0.93	1.16	7/8	52.6	10.0	47.0	2.55
PL 1/2-N4U	1/2	1/2	0.59	1.65	1.34	0.83	0.93	1.16	7/8	67.9	10.0	47.0	2.55
PL 5/8-N3U	5/8	3/8-18NPT	0.43	1.85	1.59	0.98	0.95	1.31	1.0	90.0	11.0	80.2	4.35
PL 5/8-N4U	5/8	1/2-14NPT	0.59	2.01	1.69	0.98	0.95	1.31	1.0	93.3	13.0	93.3	5.06



Long Elbow



Metric thread type



unit:mm

Model	Tube dia. φD	R	A	B	L	φP	C	E	H	Mass (g)	Orifice (φmm)	Eff. a. (mm ²)		
PLL 4-M5	4	M5×0.8	3	32.5	35	10	15	18	10	17.5	1.8	1.5		
PLL 4-01		R1/8	8	35.5	36.5					18			3	4.2
PLL 6-01	6	R1/8	8	38	40	12.5	17	20	12	26	4.6	10		
PLL 6-02		R1/4	11	41	41					14			39	
PLL 6-03		R3/8	12	43.5	43					17			61	9.5
PLL 8-01	8	R1/8	8	43.5	46.5	14.5	18	23	14	36.5	6	16.5		
PLL 8-02		R1/4	11	46.5	47.5					42.5				
PLL 8-03		R3/8	12	48.5	49					17			65.5	17.8
PLL 10-02		10	R1/4	11	54.5					57			17.5	20
PLL 10-03	R3/8		12	55.5	57.5	73								
PLL 10-04	R1/2		15	60	60.5	21	120	32.1						
PLL 12-02	12	R1/4	11	60	64.5	21	23.5	29.5	21	112	8	39.1		
PLL 12-03		R3/8	12	61	65					107			10	44
PLL 12-04		R1/2	15	64	66.5					122				
PLL 1/4-01	1/4	R1/8	8	38	40	12.5	17	20	12	26	4.6	10		
PLL 1/4-02		R1/4	11	41	41					14			39	
PLL 5/16-01	5/16	R1/8	8	43.5	46.5	14.5	18	23	14	36.5	6	16.5		
PLL 5/16-02		R1/4	11	46.5	47.5					42.5				
PLL 3/8-02	3/8	R1/4	11	54.5	57	17.5	20	26.5	17	65.5	8	30		
PLL 3/8-03		R3/8	12	55.5	57.5					73.5				

unit:inch

MODEL	Tube dia. φD	NPT	A	B	L	φP	C	E	H	Weight (g)	Orifice φMM	Eff.a. mm ²	Cv
PLL 5/32-U10U	5/32	10-32UNF	0.14	1.28	1.16	0.39	0.59	0.67	7/16	18.2	1.8	1.5	0.08
PLL 5/32-N1U	5/32	1/8	0.31	1.46	1.28	0.39	0.59	0.73	7/16	19.2	2.8	4.2	0.23
PLL 3/16-N1U	3/16	1/8	0.31	1.50	1.34	0.45	0.67	0.79	1/2	28.4	3.5	5.6	0.30
PLL 3/16-N2U	3/16	1/4	0.43	1.61	1.38	0.45	0.67	0.79	9/16	39.3	3.5	5.5	0.30
PLL 3/16-N3U	3/16	3/8	0.47	1.71	1.46	0.45	0.67	0.79	11/16	64.2	3.5	5.4	0.29
PLL 1/4-N1U	1/4	1/8	0.31	1.50	1.34	0.45	0.67	0.79	1/2	28.1	4.6	10.0	0.54
PLL 1/4-N2U	1/4	1/4	0.43	1.61	1.38	0.45	0.67	0.79	9/16	39.1	4.6	10.0	0.54
PLL 1/4-N3U	1/4	3/8	0.47	1.71	1.46	0.45	0.67	0.79	11/16	64.0	4.6	9.5	0.51
PLL 5/16-N1U	5/16	1/8	0.31	1.71	1.56	0.57	0.71	0.91	9/16	36.6	6.0	16.5	0.89
PLL 5/16-N2U	5/16	1/4	0.43	1.81	1.59	0.57	0.71	0.91	9/16	42.5	6.0	16.5	0.89
PLL 5/16-N3U	5/16	3/8	0.47	1.91	1.65	0.57	0.71	0.91	11/16	68.4	6.0	17.8	0.96
PLL 3/8-N2U	3/8	1/4	0.43	2.15	1.91	0.69	0.79	1.04	11/16	67.5	8.0	30.0	1.63
PLL 3/8-N3U	3/8	3/8	0.47	2.19	1.93	0.69	0.79	1.04	11/16	76.1	8.0	30.0	1.63
PLL 3/8-N4U	3/8	1/2	0.59	2.36	2.05	0.69	0.79	1.04	7/8	128.7	8.0	32.1	1.74
PLL 1/2-N2U	1/2	1/4	0.43	2.36	2.13	0.83	0.93	1.16	7/8	119.2	8.0	39.1	2.12
PLL 1/2-N3U	1/2	3/8	0.47	2.40	2.15	0.83	0.93	1.16	7/8	115.8	10.0	44.0	2.38
PLL 1/2-N4U	1/2	1/2	0.59	2.52	2.20	0.83	0.93	1.16	7/8	130.3	10.0	54.2	2.94